



# DSP Control Software

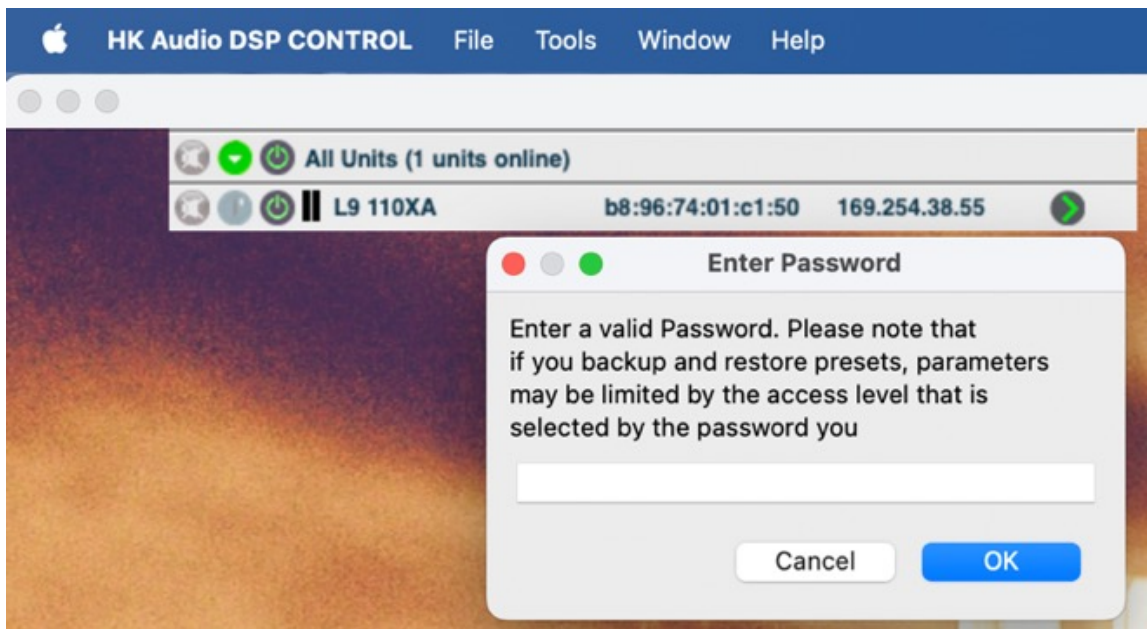
*THE SMART, POWERFUL CONTROL TOOL*



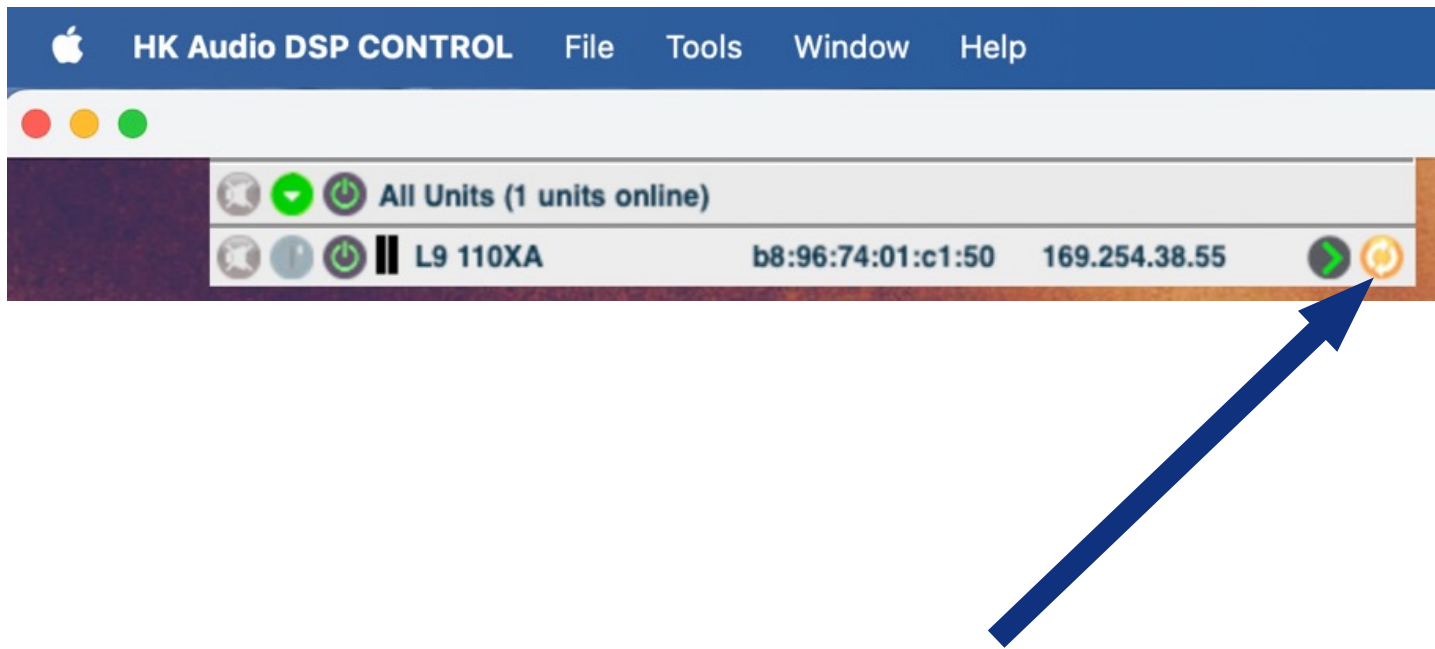
# Preset 4



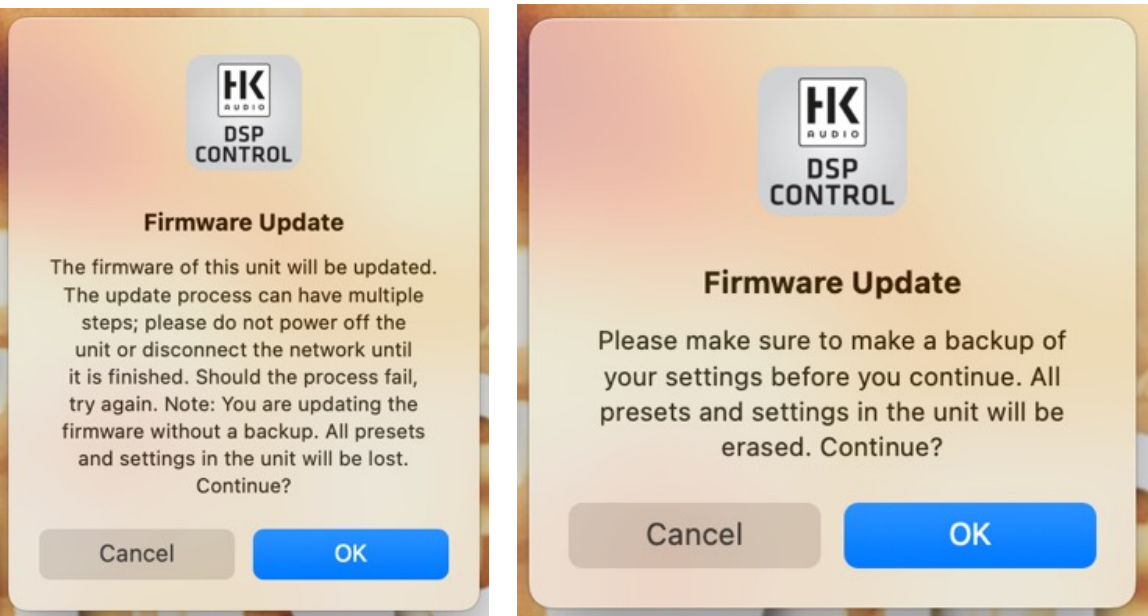
01 Click on “Tool”, click on “Enable Update”



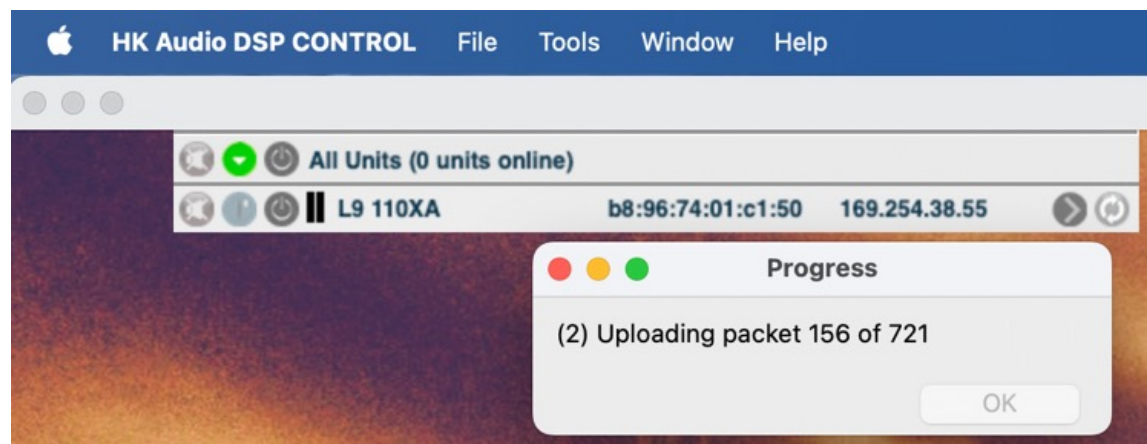
02 Enter the password: HK\_adm



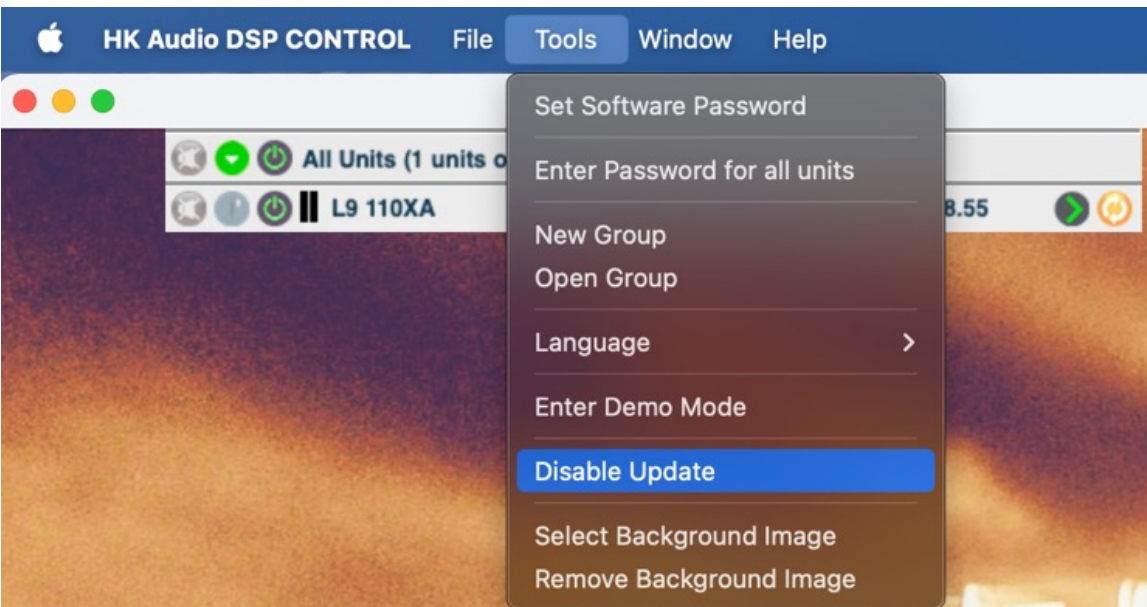
03 Select the box that should receive the update by clicking on the orange circle.



04 Click on “Tool”, click on “Enable Update”



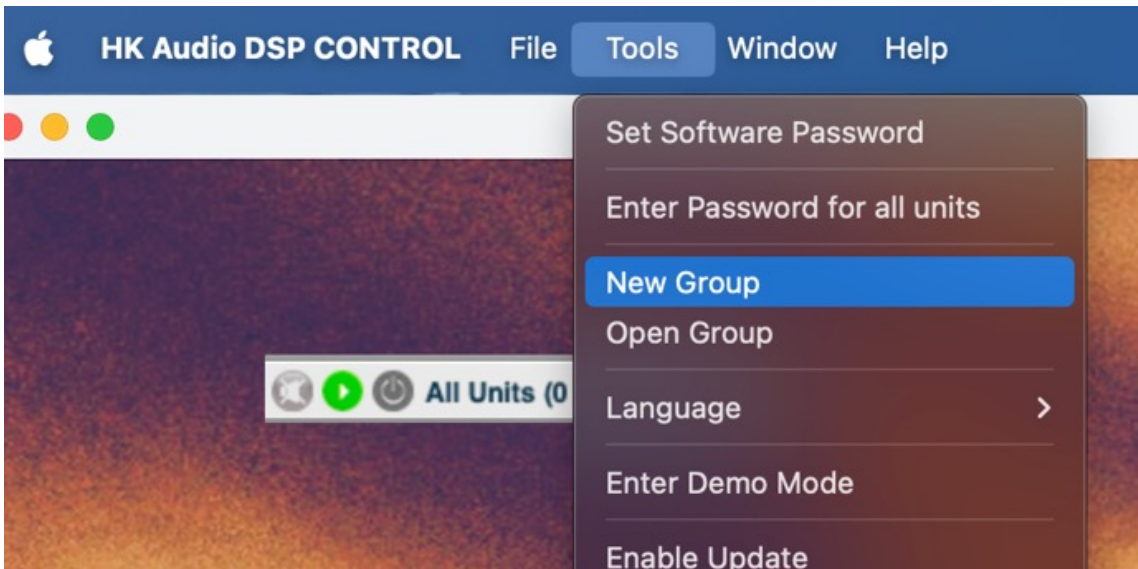
05 Click on “Tools,” “Disable Update” after the update is completed.



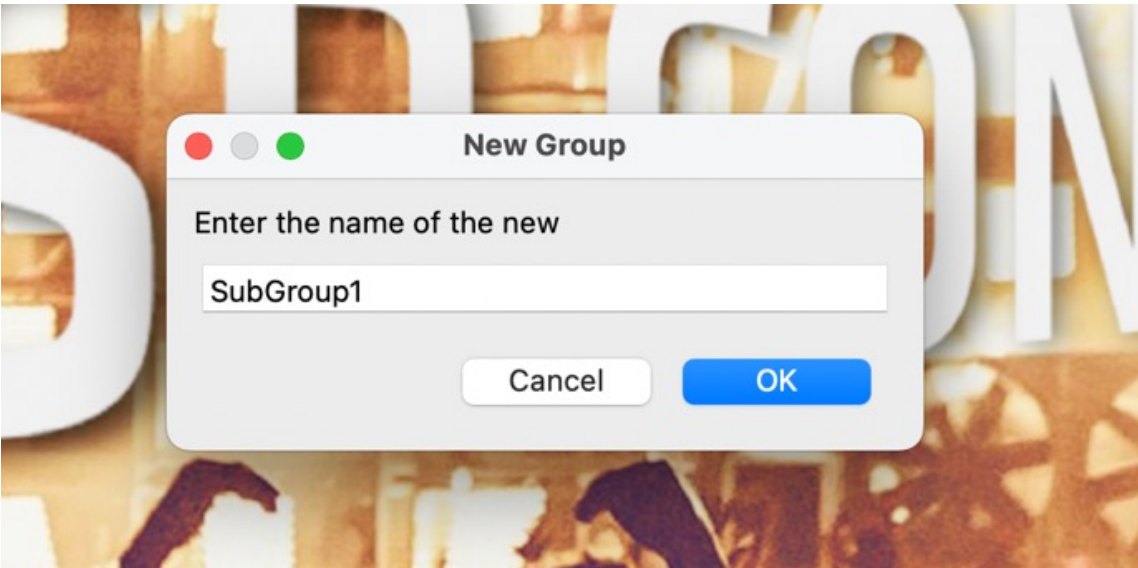


# Groups

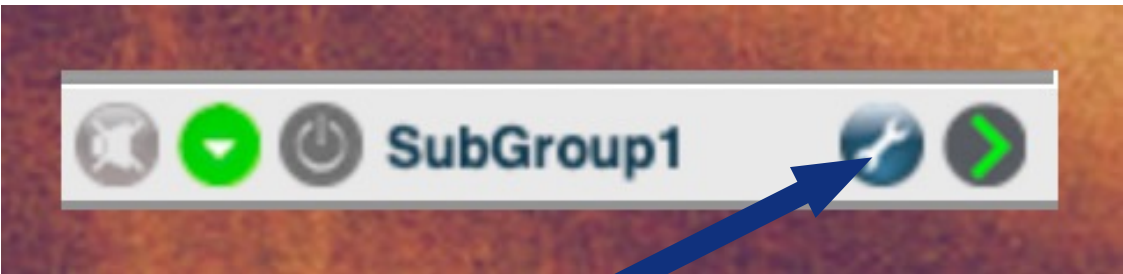
With the help of a subgroup, several signals can be adjusted in level. In addition, this group can be processed with a 5-band EQ, delay, and limiter.



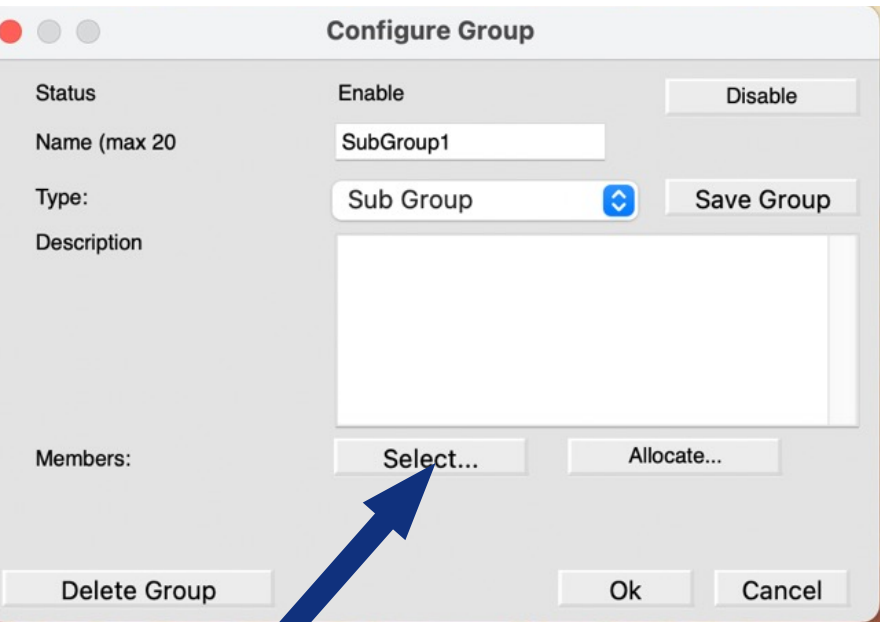
01 Click on “Tools”, click on “New Group”



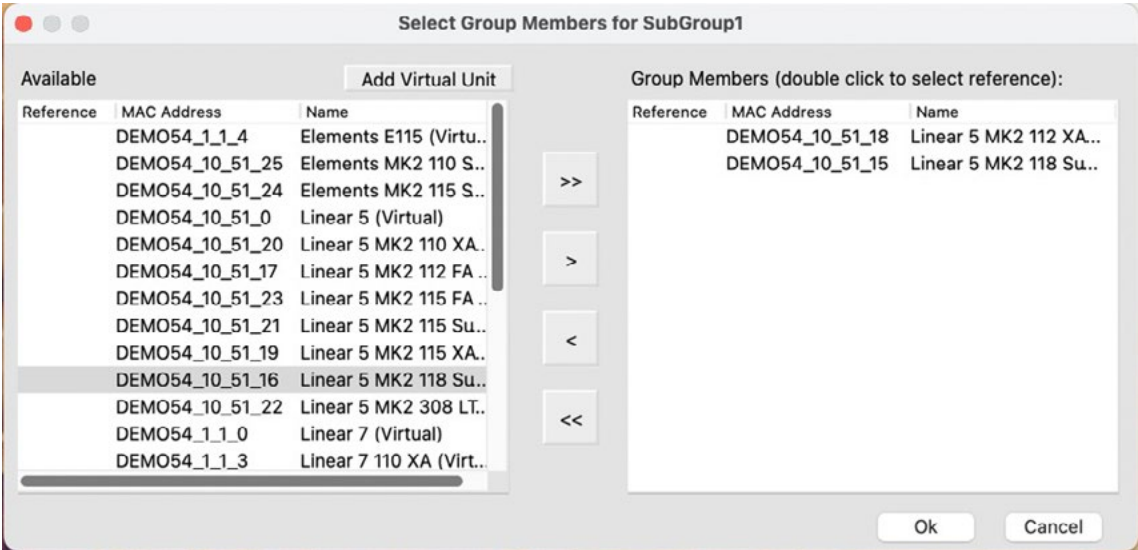
02 Enter a group name



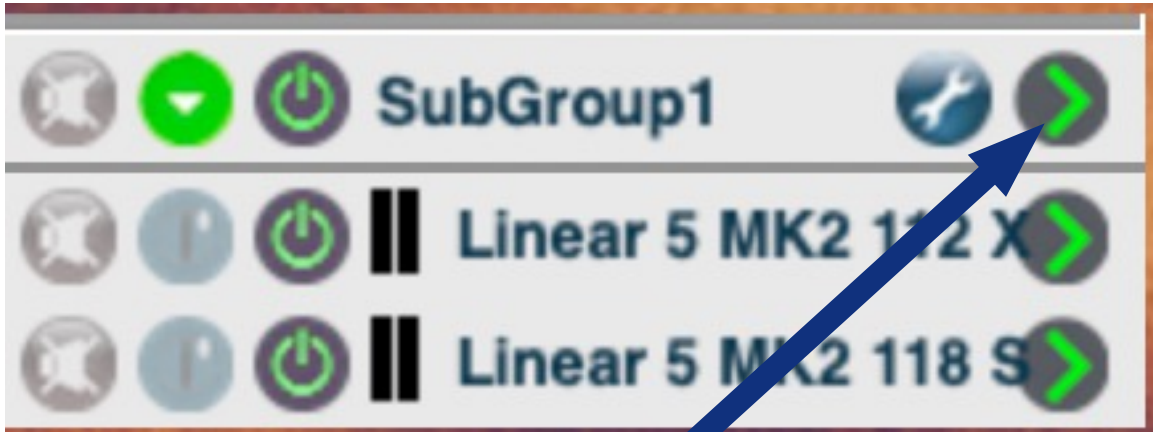
03 Click on the tool icon



04 Click on Members: “Select...”



05 Now select the group members and click “>”, then click “OK”.



06 Click on the green arrow to change the group settings.

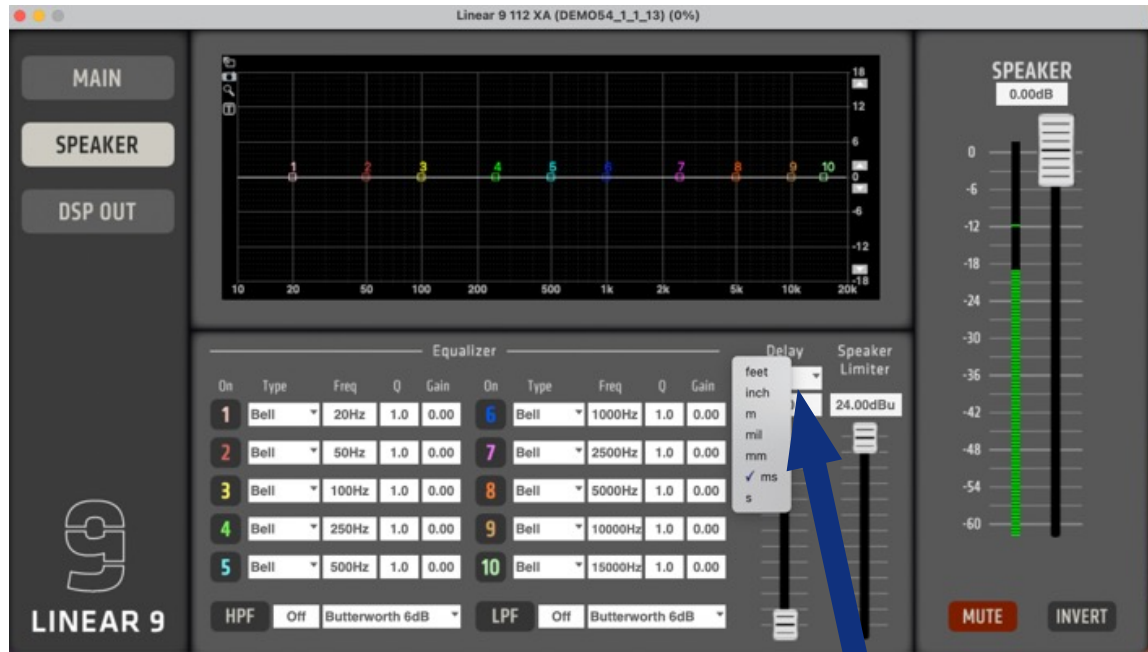
# Delay



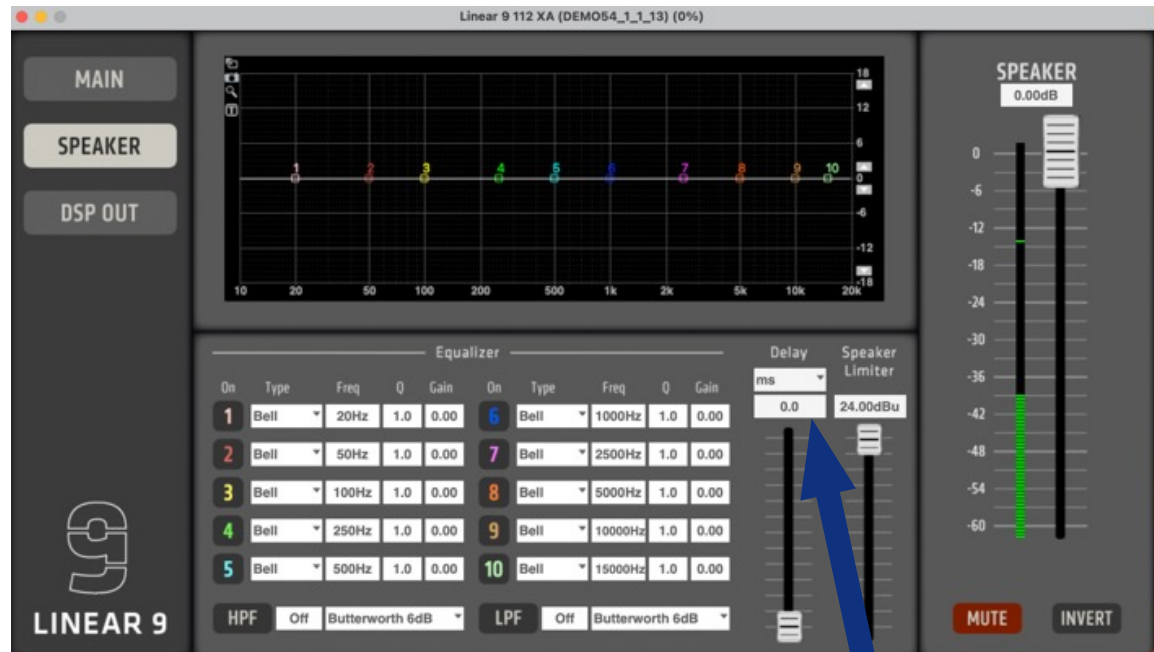
01 Click on the speaker you want to edit.



02 Click on “SPEAKER” or “DSP OUT”



03 Click on the desired unit



04 Enter the delay value using the fader or by double-clicking.

Die Parameter für den “SPEAKER” und die “DSP-OUT” sind identisch.



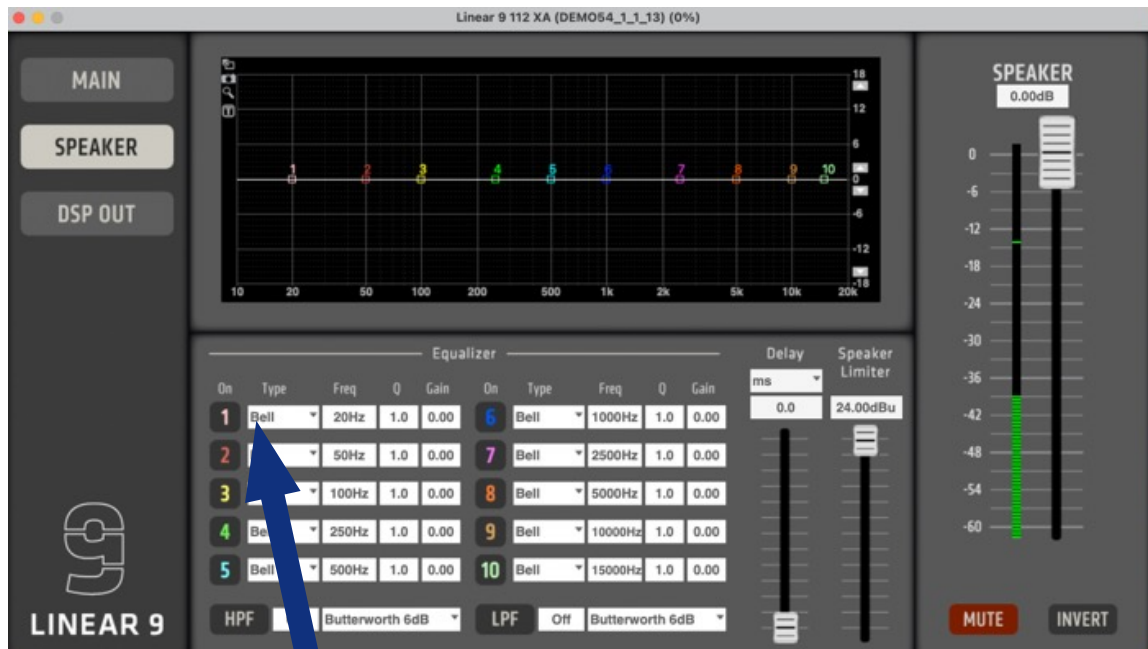
# Equalizer



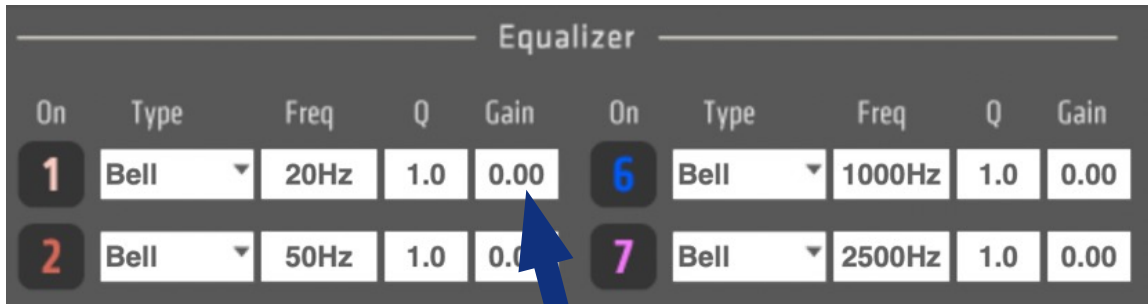
01 Click on the speaker to be edited.



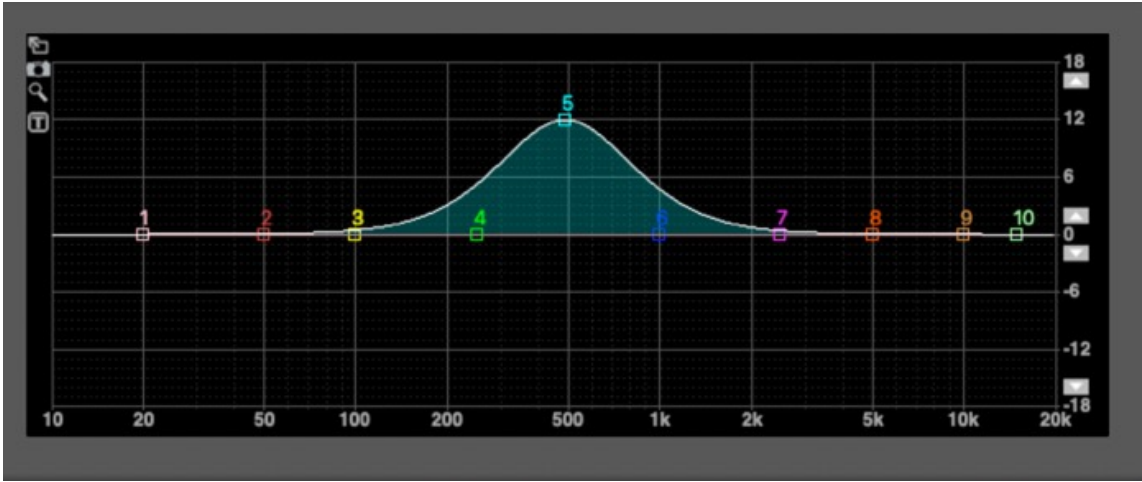
02 Click on “SPEAKER” or “DSP OUT.”



03 Select a filter type in one of the ten bands.



04 Enter the values for frequency (Freq), quality factor (Q), and gain/cut in dB (Gain).

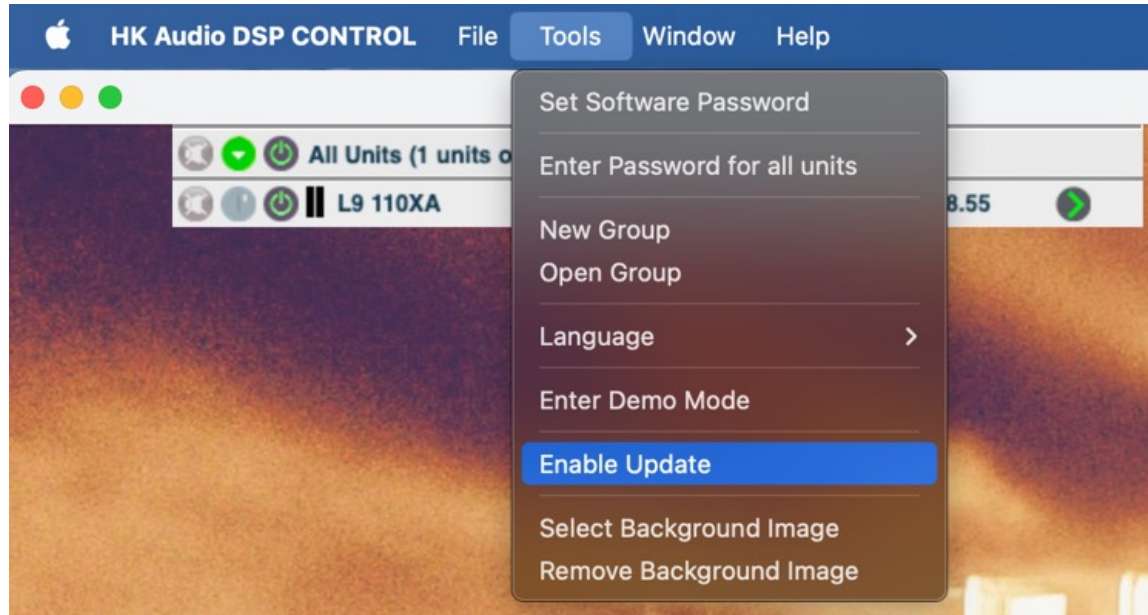


05 Alternatively, you can adjust the values in the graph using the mouse.

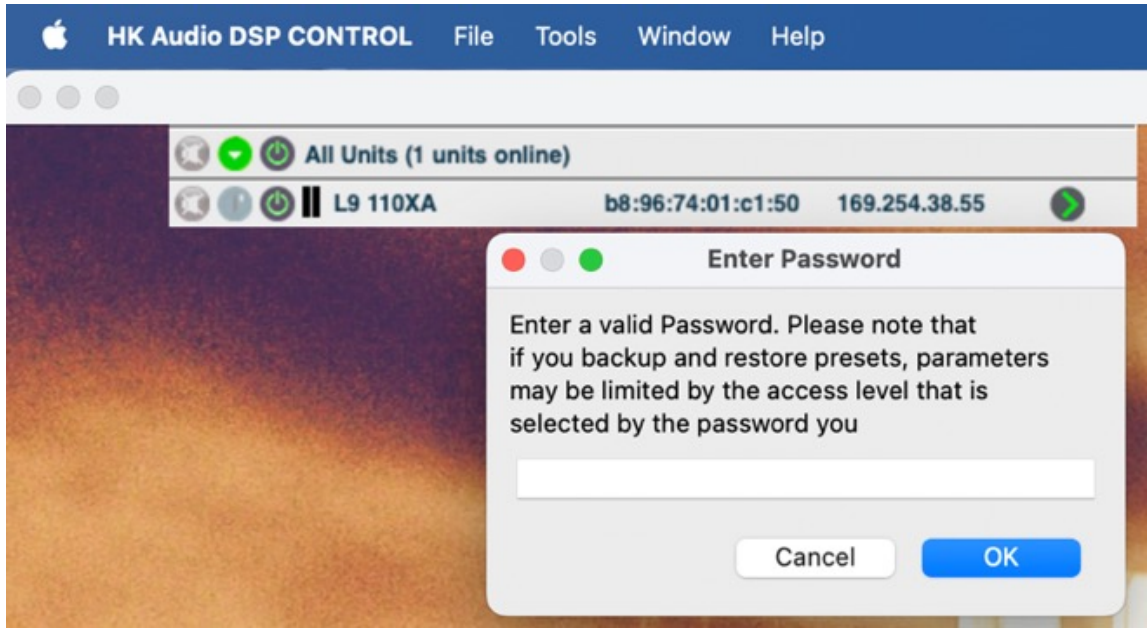
The parameters for “SPEAKER” and “DSP OUT” are identical.



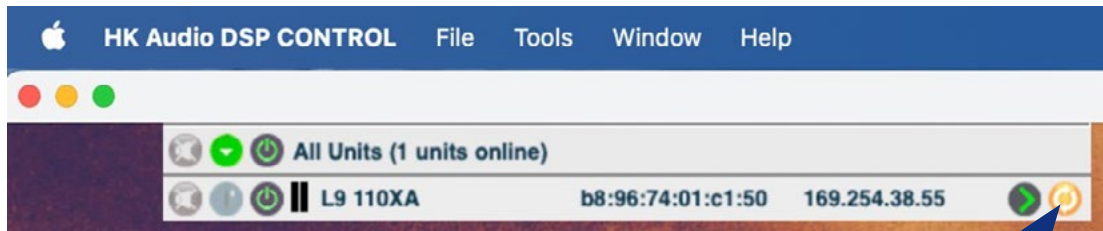
# Update



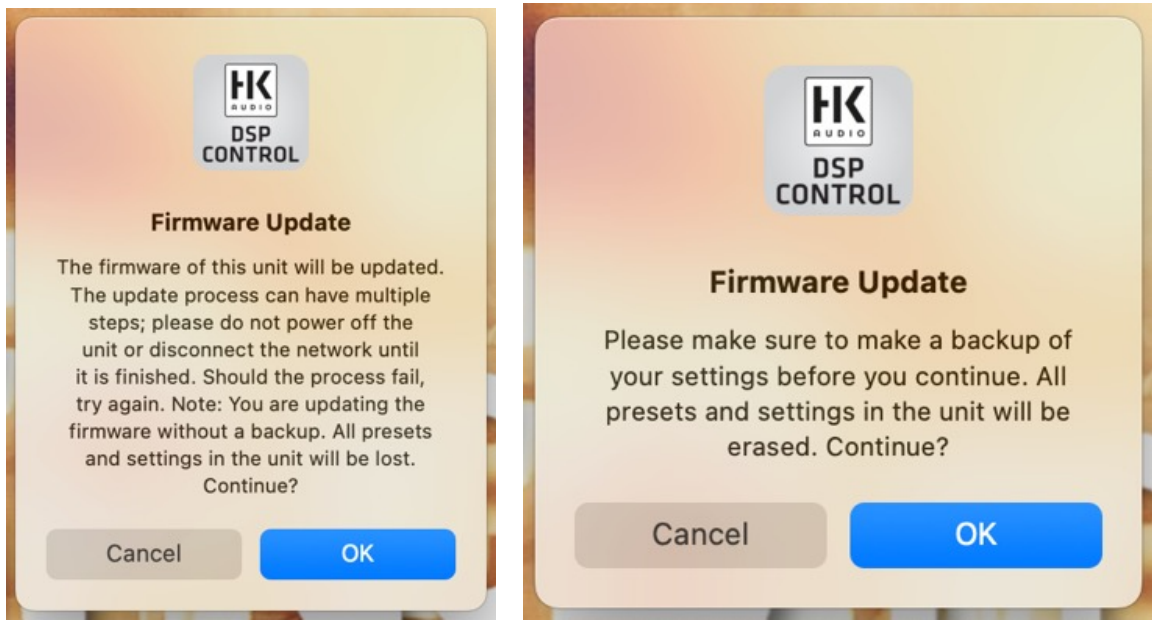
01 Click on “Tool”, click on “Enable Update”.



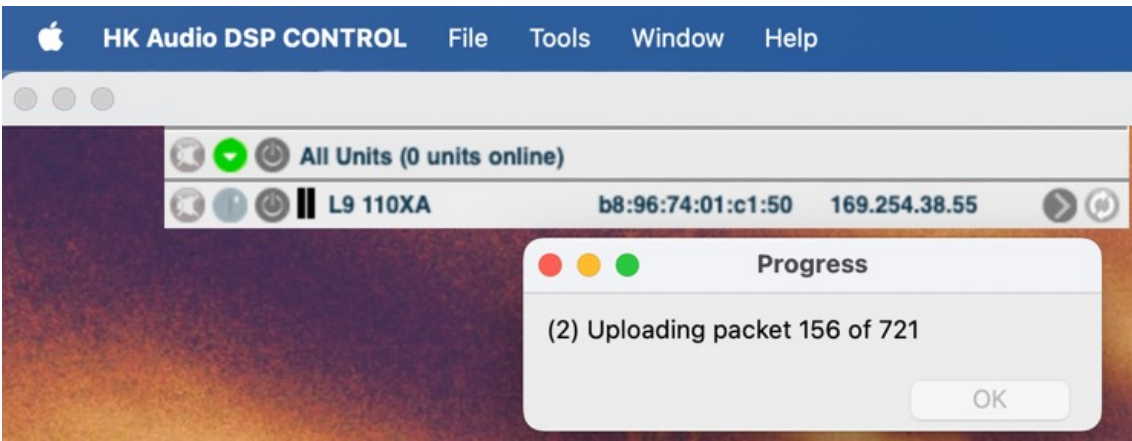
02 Enter the password: HK\_adm



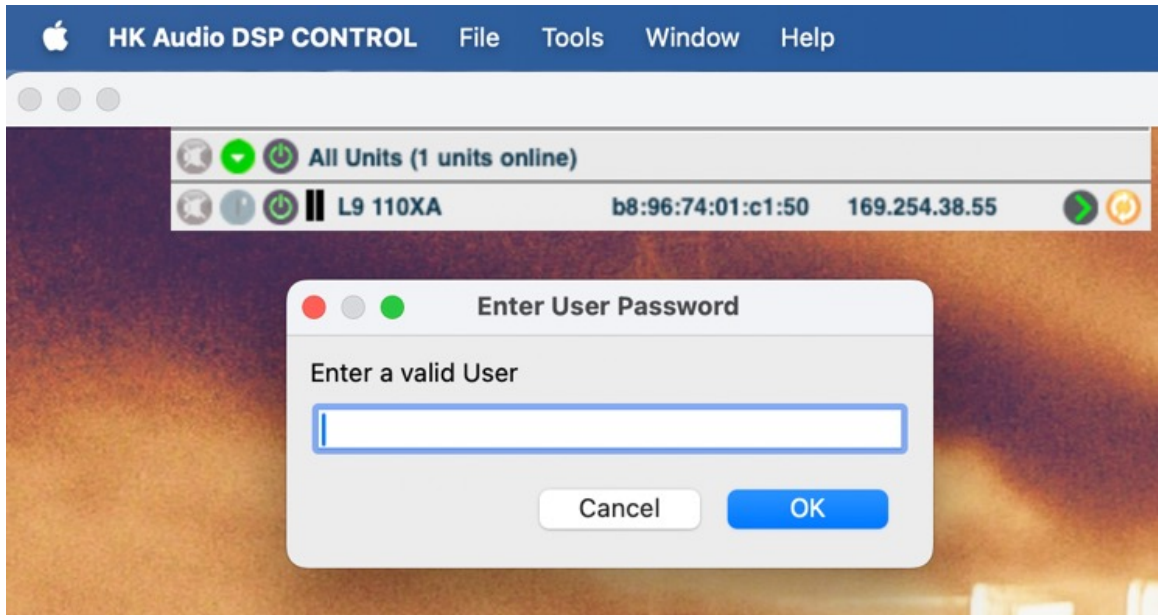
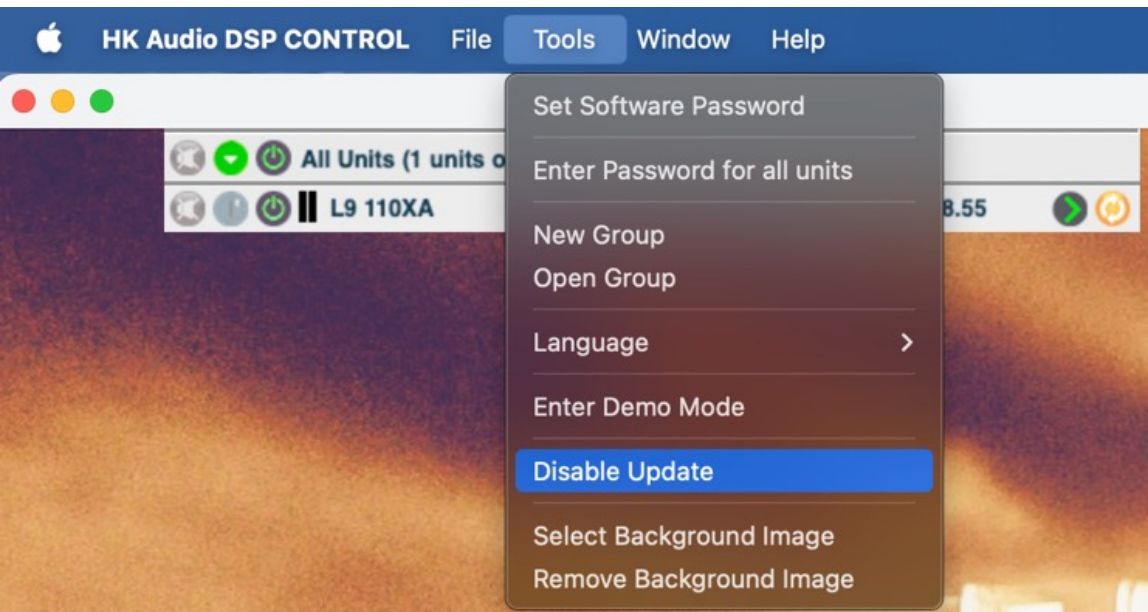
03 Select the box that should receive the update by clicking on the orange circle.



04 Confirm the prompts by clicking “OK”.



05 After the update is completed, click on “Tools,” then “Disable Update”.



06 Enter a user password of your choice.

You can find the software version under “Help” → “About.” Compare it regularly with the current version at [www.hkaudio.com](http://www.hkaudio.com). Download and install the newer version to access new features. Firmware files for the speakers do not need to be downloaded separately, as they are included in the DSP-Control software.